



WHAT IS URBAN BEEKEEPING?

Also known as apiculture, keeping honeybees for domestic or commercial purposes is recognized by the Provincial Government and has recently gained greater public acceptance in the urban environment. As an urban municipality, the City of Burnaby supports urban beekeeping while requiring a number of important rules to remember.

WHERE IN BURNABY CAN BEES BE KEPT?

There are seven Residential Zoning Districts; R1, R2, R3, R4, R5, R10, and R11, which now permit beekeeping as an accessory use for domestic purposes. The individual property lots can only be for single family dwelling. They cannot be less than 15 meters (49.2 feet) in width and cannot have areas of less than 557.4 square meters (6,000 square feet).

The City of Burnaby's three Agricultural Zoning Districts, A1 (Agricultural District), A2 (Small Holdings District) and A3 (Truck Gardening District), permit beekeeping for domestic and commercial purposes.

WHERE CAN THEY BE SITED ON THE PROPERTY LOT?

In the Residential Zoning Districts, beehives, also known as apiaries, or the structures inhabited by bees, can only be sited in the rear yard that has a solid fence or hedge which is not less than 1.8 meters (5.91 feet) in height. If the fence or hedge is smaller, the set back distance from all property lines cannot be less than 7.5 meters (25 feet) in distance and the actual hives or structures are raised to not less than 2.5 meter (8 feet) above the surface of the ground.

In the Agricultural Zoning Districts, beekeeping structures cannot be sited less than 24.5 meters (80.38) in distance from all streets and property lot lines, and cannot be less than 9 meters (29.53 feet) from a dwelling on the same property lot.

HOW MANY CAN BE KEPT?

In applicable Residential Zoning Districts, only two beehives and two nucleus colonies are permitted on each lot.

HOW IS THE BC PROVINCIAL GOVERNMENT INVOLVED?

Don't forget that apiculture is regulated by the British Columbia Provincial Government. Currently, the Provincial Bee Act requires that bee colonies and their location be registered with the BC Ministry of Agriculture and Lands (BCMAL). Contact the Provincial Apiculturist, Apiary Inspector or go to: <http://www.agf.gov.bc.ca/apiculture/> for up-to-date information. Apiculture is significant in BC; in 2009 the Province of British Columbia proclaimed May 29th, 2010 as "The Day of the Honey Bee".

WHY APICULTURE?

The many benefits in having honeybees in our community, whether for pollination and biodiversity, honey and other products, or educational purposes make apiculture an important part of Burnaby's environment. Honeybees are, by and large, friendly and differ in behaviour from wasps or hornets. They do sometimes swarm; however as long as appropriate measures are followed they can be enjoyed by all.

For more information visit the BC Provincial website <http://www.agf.gov.bc.ca/apiculture/> or the BC Honey Producers Association at <http://www.bcbeekeepers.com/>.



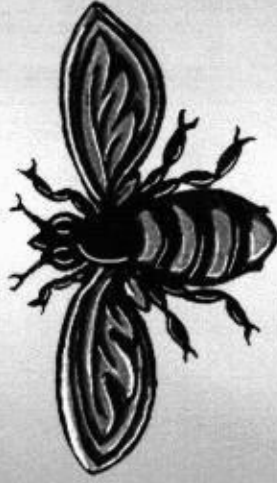
RESOURCES

British Columbia Honey Producers Association
<http://www.bcbeekeepers.com>

Canadian Honey Council
<http://www.honeycouncil.ca/>

Apiary Inspectors of America
<http://www.apiaryinspectors.org/>

International Bee Research Association
<http://www.ibra.org.uk/>



APICULTURE

URBAN BEEKEEPING IN BURNABY

**CITY OF BURNABY'S
REGULATIONS REGARDING THE
KEEPING OF HONEYBEES**



The information provided is for convenience only and cannot be used in substitute of applicable City, Bylaws, Provincial or Federal codes or laws. Please contact the Burnaby Planning and Building Department to obtain further information.